

## **Q&A**

**2. The O.S. can't find the LABTOOL-848XP after power on.**

**Sol:**

**Step1. Install the LABTOOL-848XP software. If you do not have the software, and you can download it from our website([www.aec.com.tw](http://www.aec.com.tw)). If you have installed the software, skip this step.**

**Step2. Turn the LABTOOL-848XP power on.**

**Step3. Select “Start → Control Console → System → Hardware → Device Manager”. You will see an “! USB Device” in your PC.**

**Step4. Uninstall the “USB Device”**

**Step5. Turn the LABTOOL-848XP power off.**

**Step6. Turn the LABTOOL-848XP power on and then the OS found out a new USB device from your USB interface.**

**Step7. Select “Start → Control Console → System → Hardware → Device Manager” and you will see the “AEC LabTool-848XP Turbo Gang Programmer”**

**Step8. Run the LABTOOL-848XP software.**

**Note : Recommended O.S. in your PC**

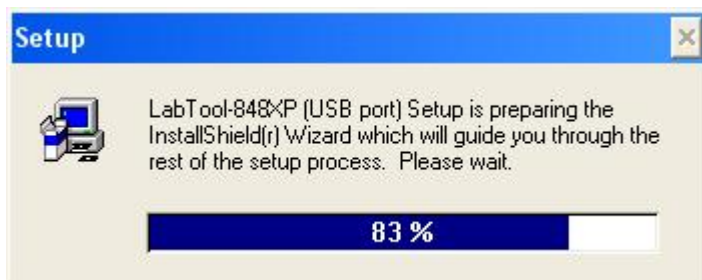
- (1) Windows XP + SP1**
- (2) Windows XP + SP2**
- (3) Windows 2000 + SP4**

**Step1. Install the LABTOOL-848XP software. If you do not have the software, and you can download it from our website([www.aec.com.tw](http://www.aec.com.tw)). If you have installed the software, skip this step.**

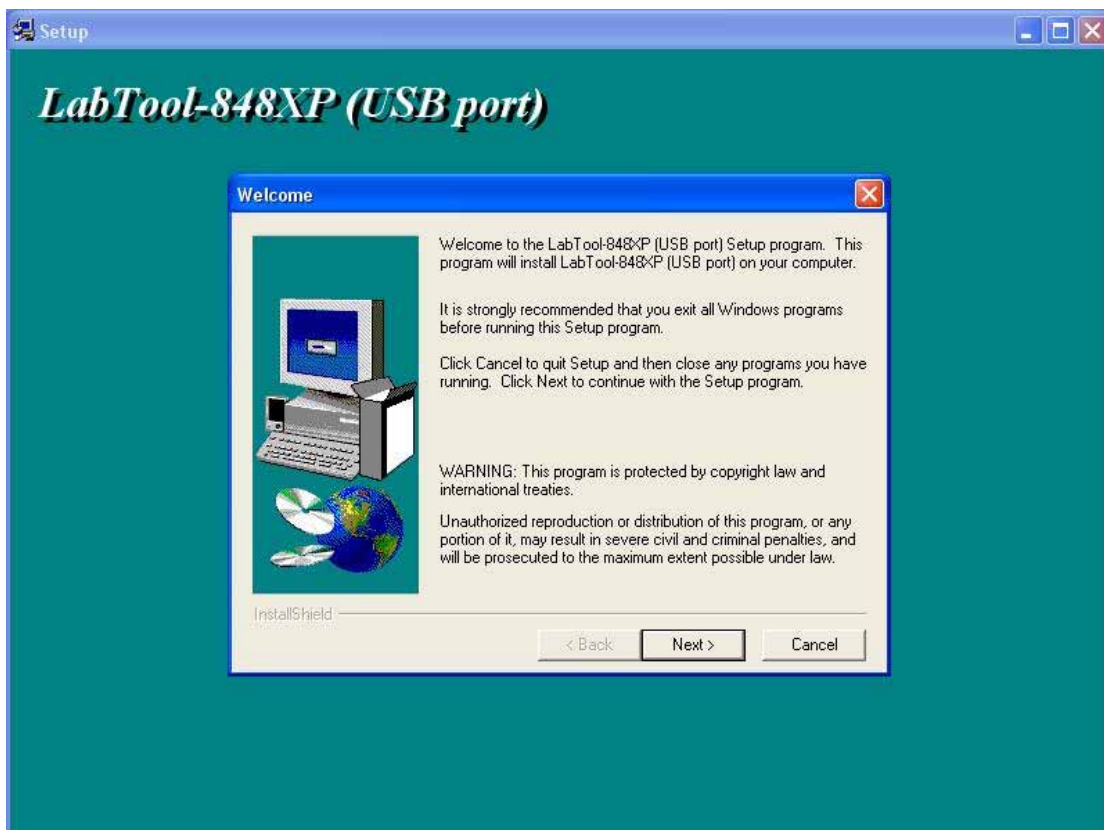
**Fig1-1 : Press “ Yes”**



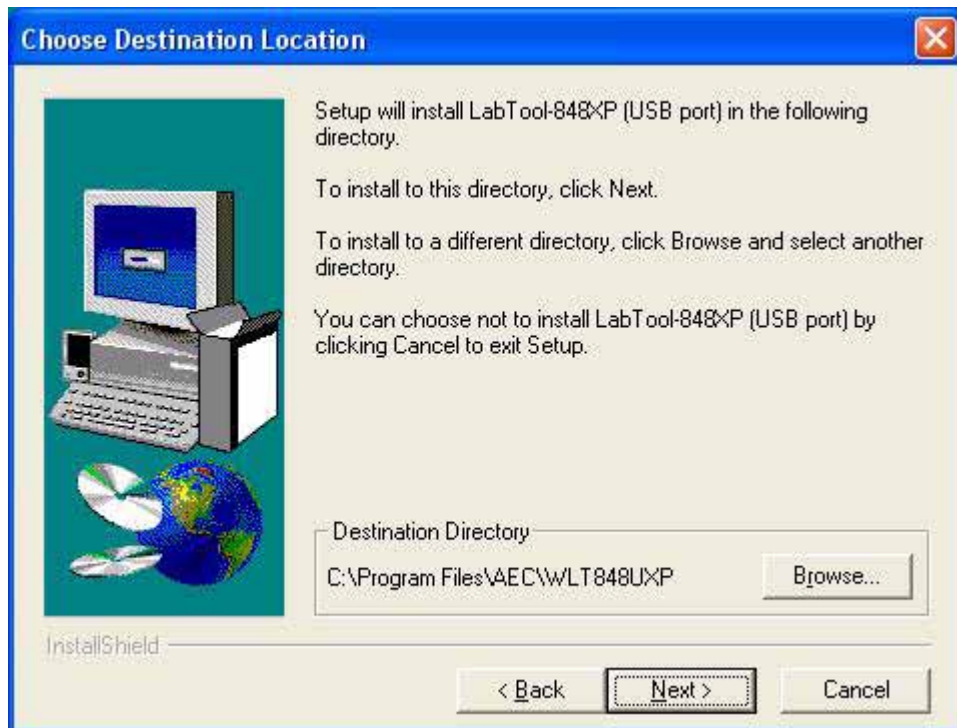
**Fig1-2 : Extracting**



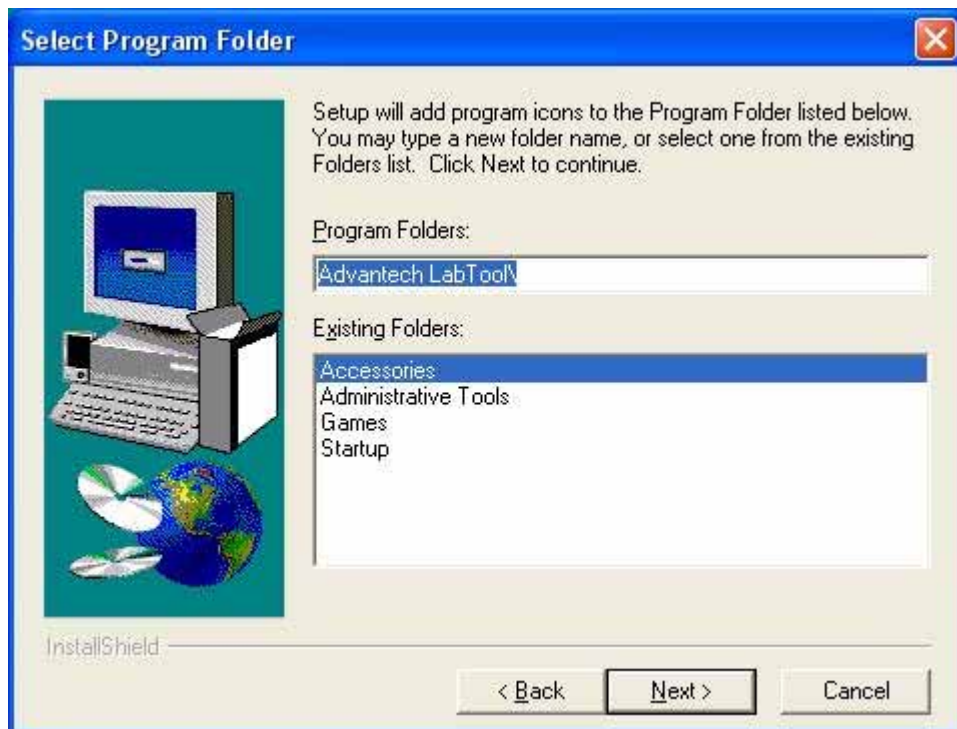
**Fig1-3 : Press “ Next”**



**Fig1-4 : Press “ Next”**



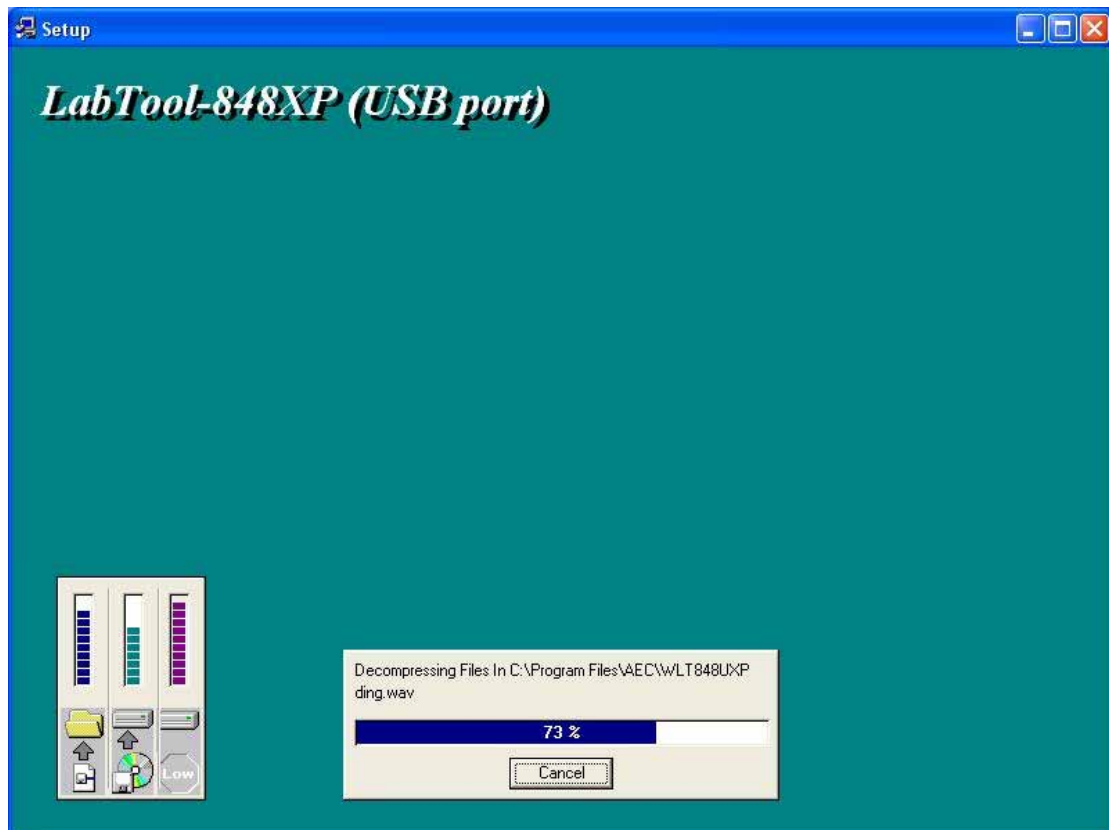
**Fig1-5 : Press “ Next”**



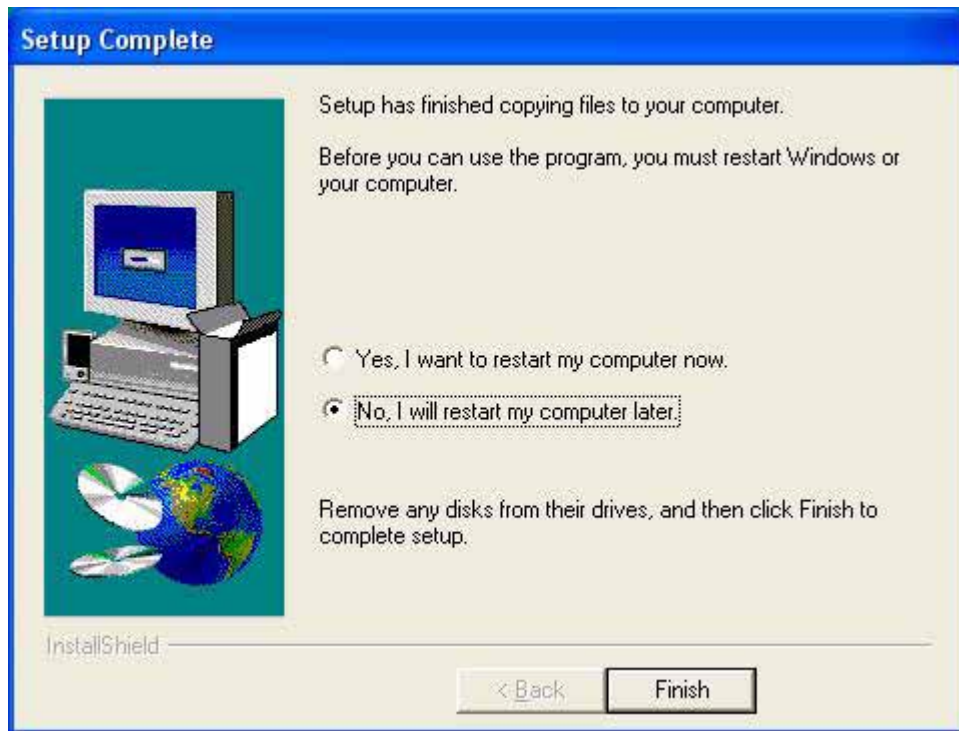
**Fig1-6 : Press “ Next”**



**Fig1-7 : Installing**



**Fig1-8 : Select “No, I will restart my computer later” and then press “Finish”**



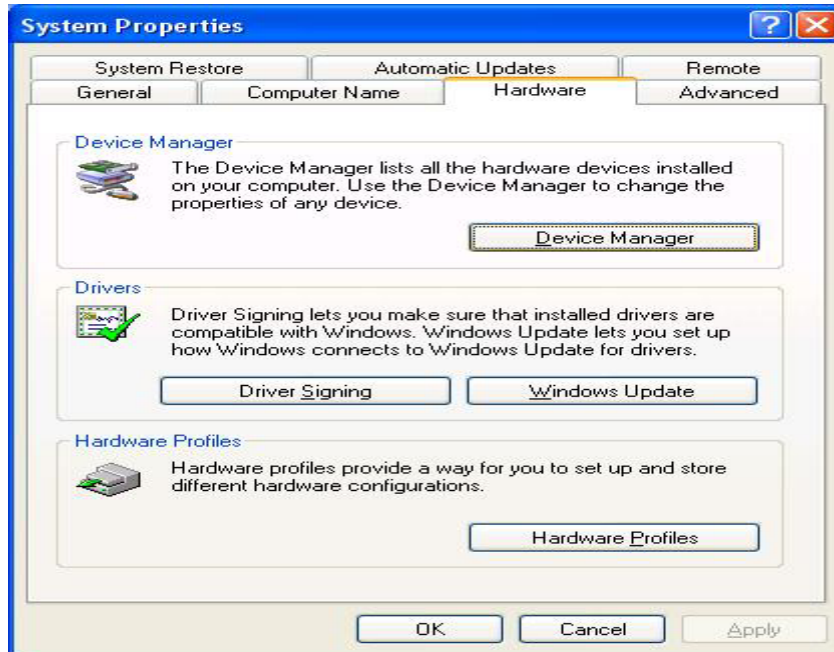
**Fig1-9 : Press “Finish”**



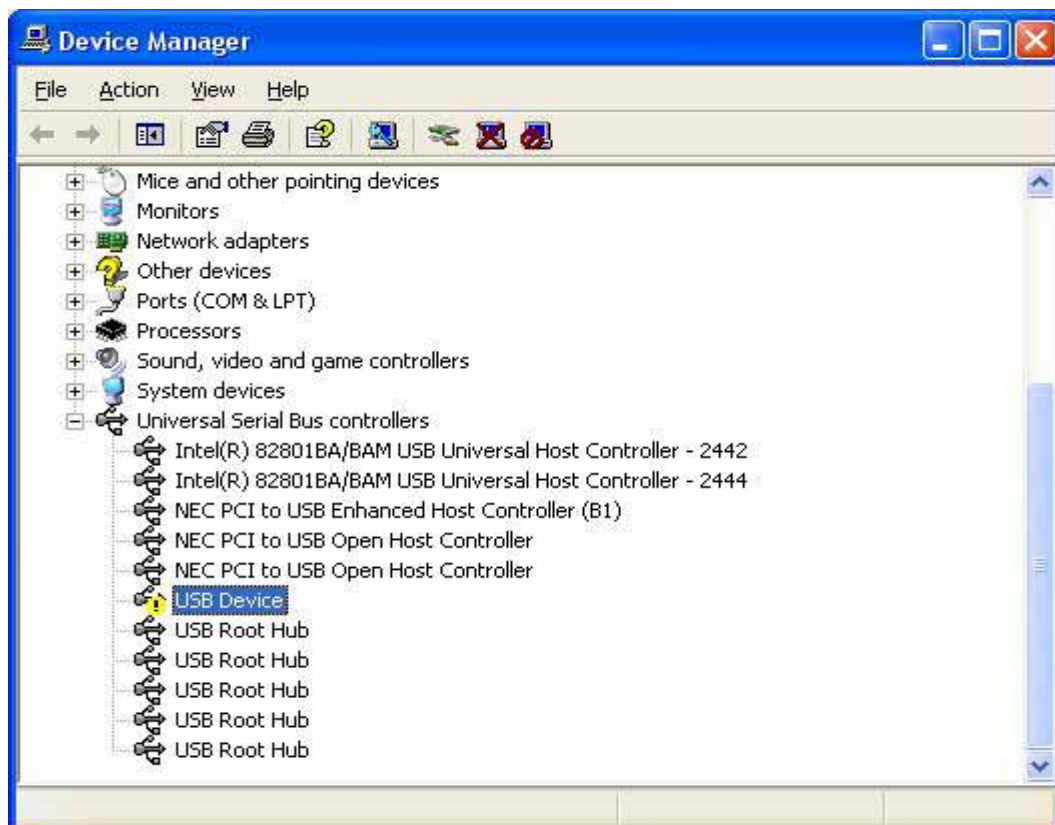
**Step2. Turn the LABTOOL-848XP power on.**

**Step3. Select “Start → Control Console → System → Hardware → Device Manager”. You will see the “! USB Device” in your PC.**

**Fig3-1 : Press “Device Manager”**

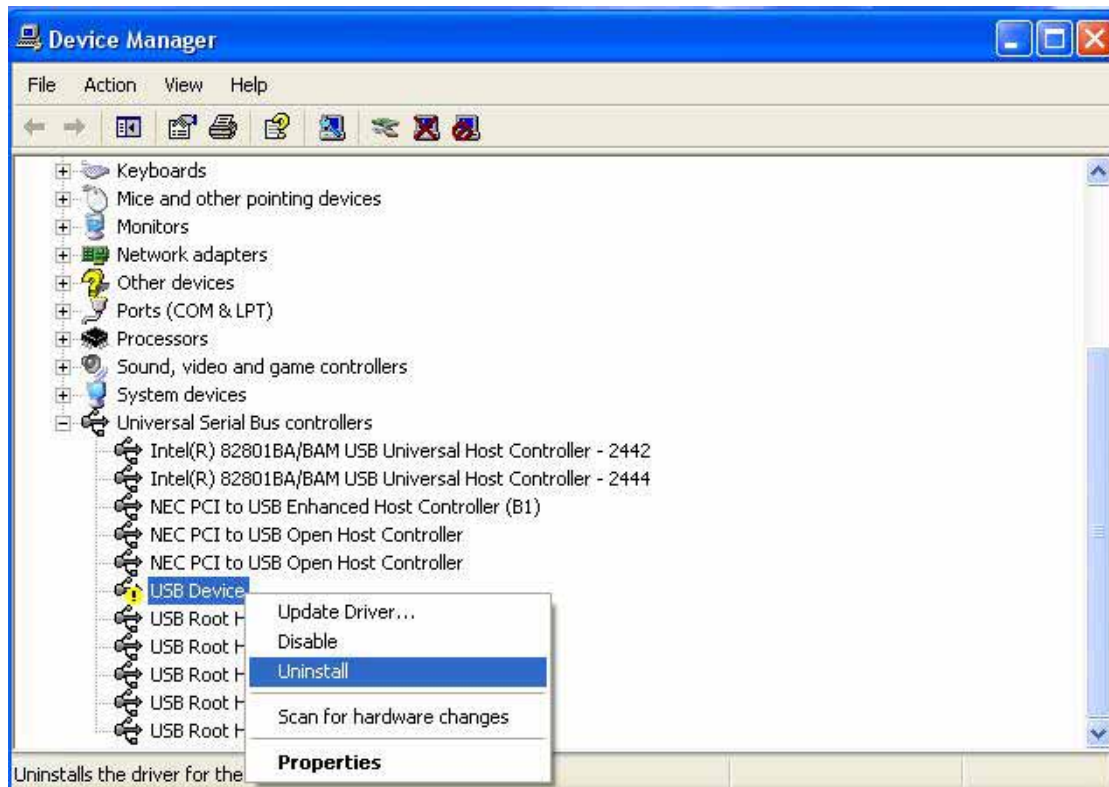


**Fig3-2 : The “!USB Device” may be below “Universal Serial Bus controllers” or “ Other devices”**



**Step4. Uninstall the “USB Device”**

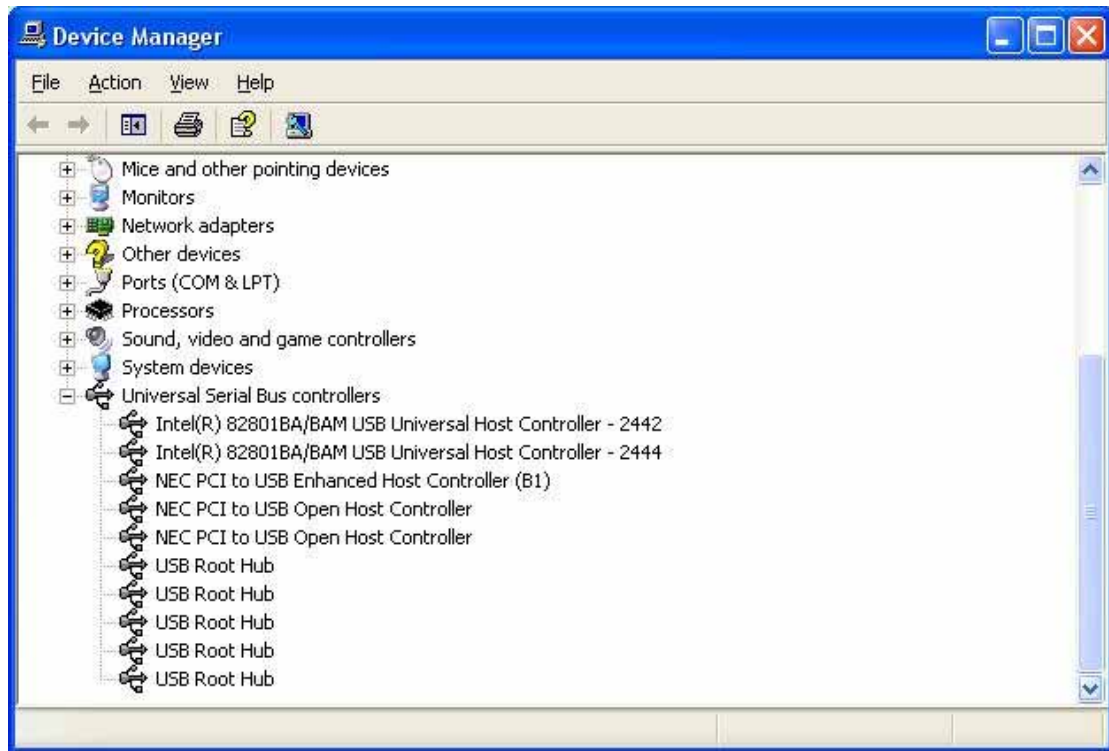
**Fig4-1 : Press the right button of the mouse and select “Uninstall”.**



**Fig4-2 : Press “OK”**



**Fig4-3 : Device Manager after uninstalling**





Step5. Turn the LABTOOL-848XP power off.

Step6. Turn the LABTOOL-848XP power on and then the OS found out a new USB device from your USB interface.

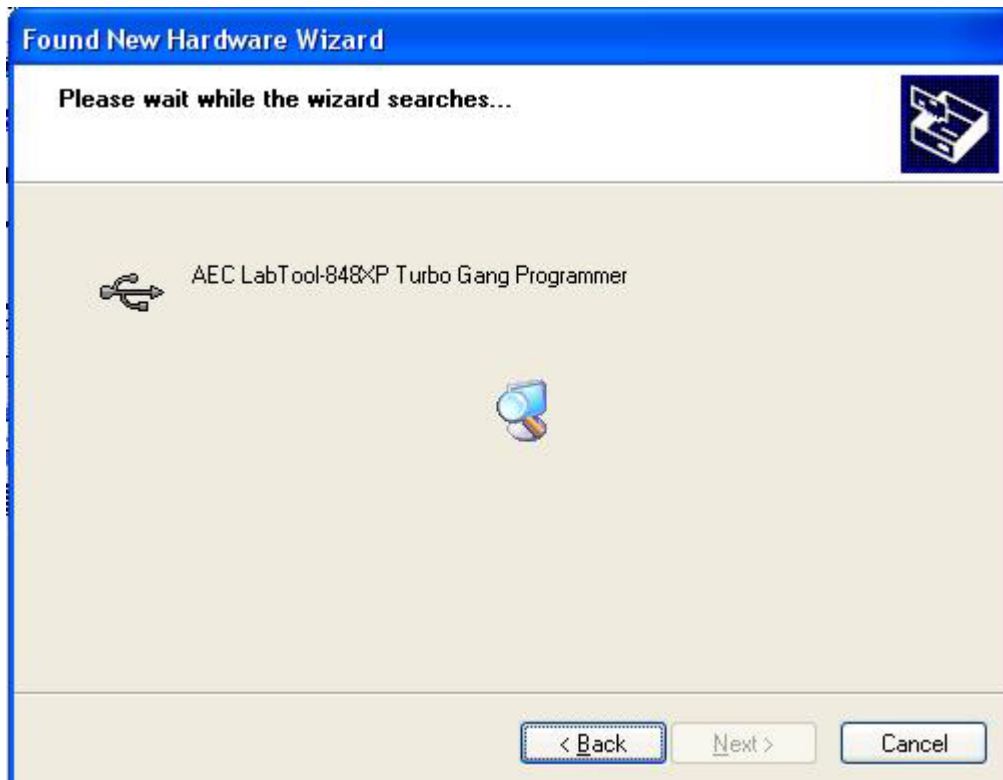
Fig6-1 : Select “No, not this time” and press ”Next”



Fig6-2 : Select “Install the software automatically (Recommended)” and then press “Next”



**Fig6-3 : Installing**



**Fig6-4 : Press “ Continue Anyway”**. If you select the other button, the O.S. will has a wrong “!USB Device” in your PC.



**Fig6-5 : Press “Finish”**



Step7. Select “Start → Control Console → System → Hardware → Device Manager” and you will see the “AEC LabTool-848XP Turbo Gang Programmer”

Fig7-1 : Press “Device Manager”

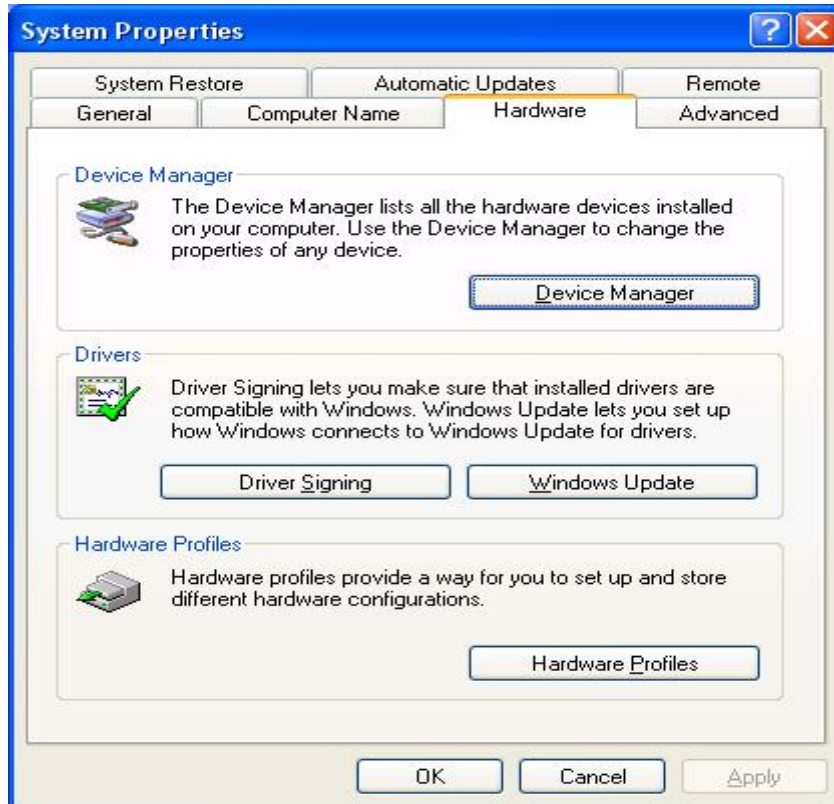
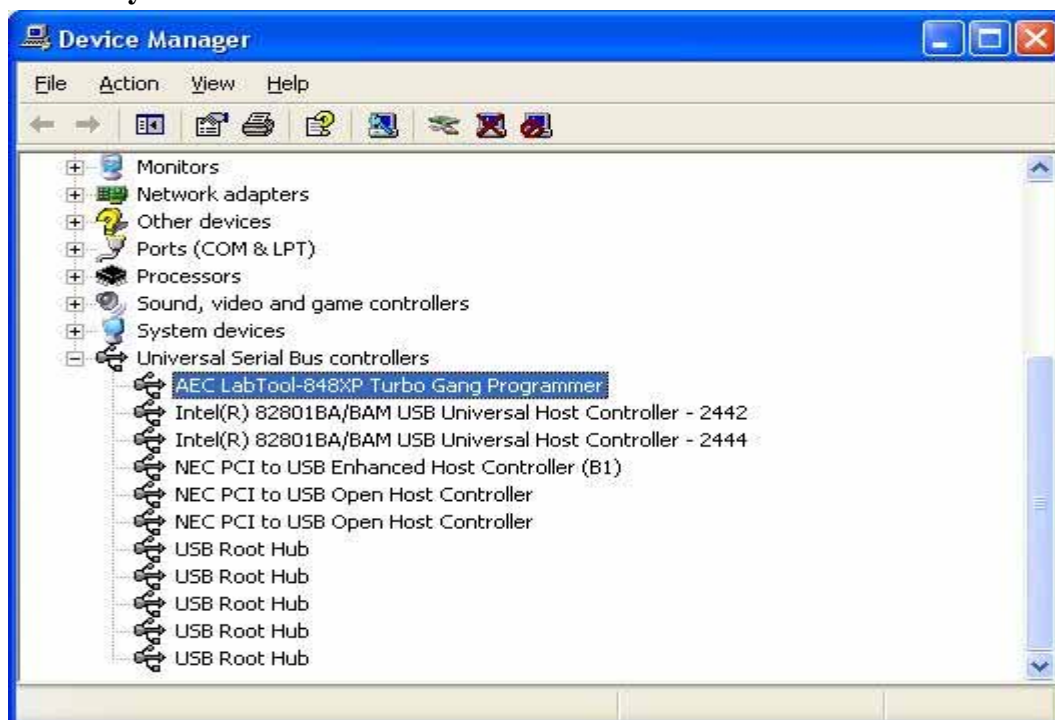
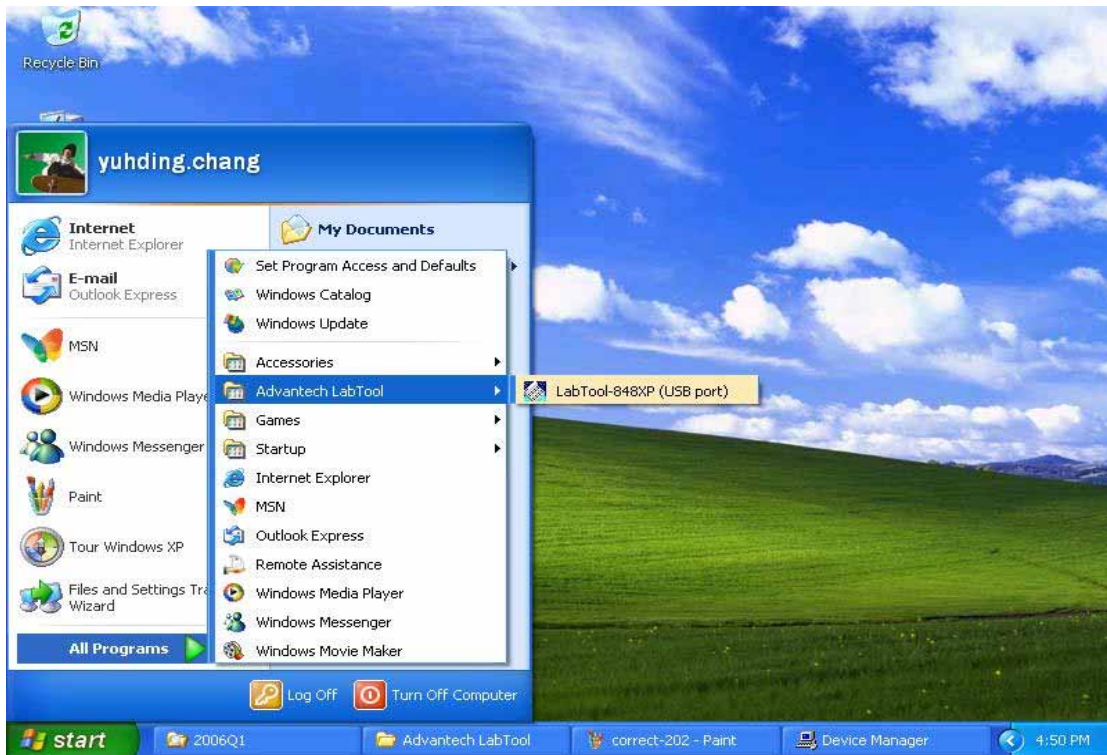


Fig7-2 : You will see the “AEC LabTool-848XP Turbo Gang Programmer” below your “Universal Bus controllers”.



**Step8. Run the LABTOOL-848XP software.**

**Fig8-1: Select “Start” -> “All Programs” -> ” Advantech LabTool” -> “LabTool-848XP (USB port)”**



**Fig8-2 : After run the LabTool-848XP software, you will see your LabTool-848XP serial number with USB interface.**

